

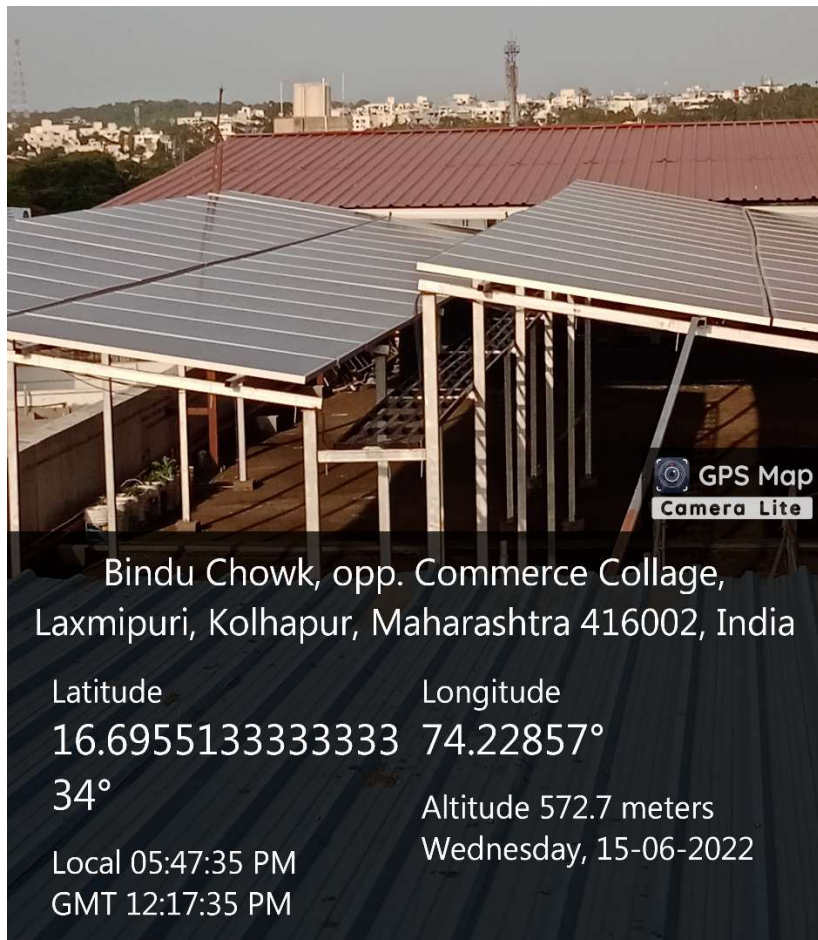
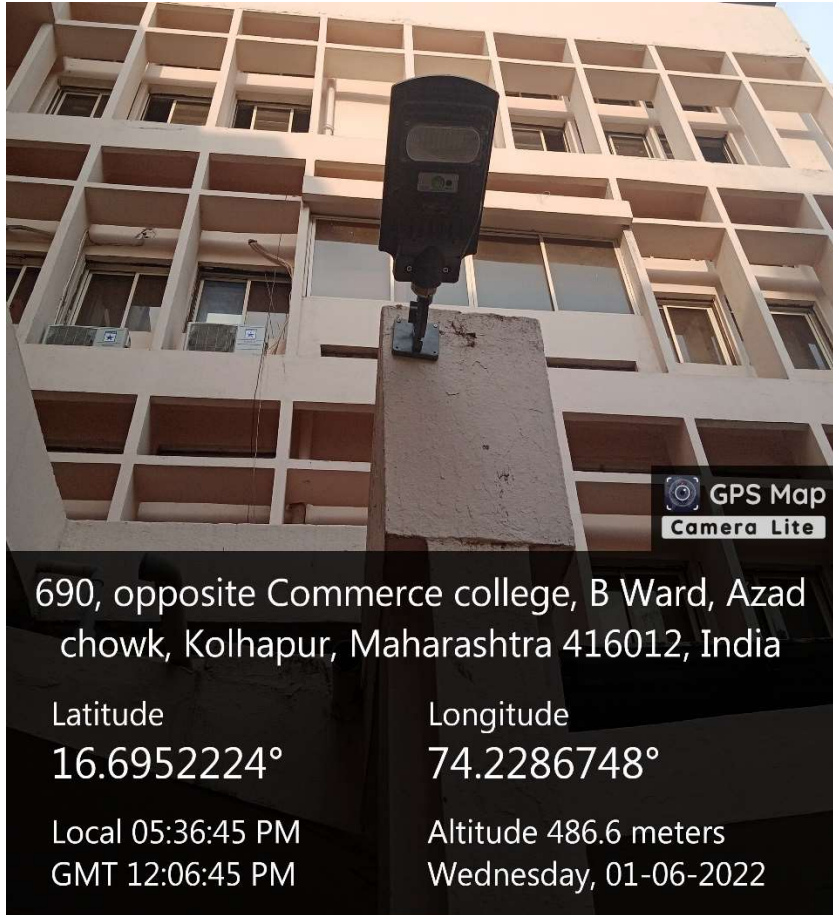
C RITERION 7

7.1.2

Alternate sources of energy and energy conservation measures

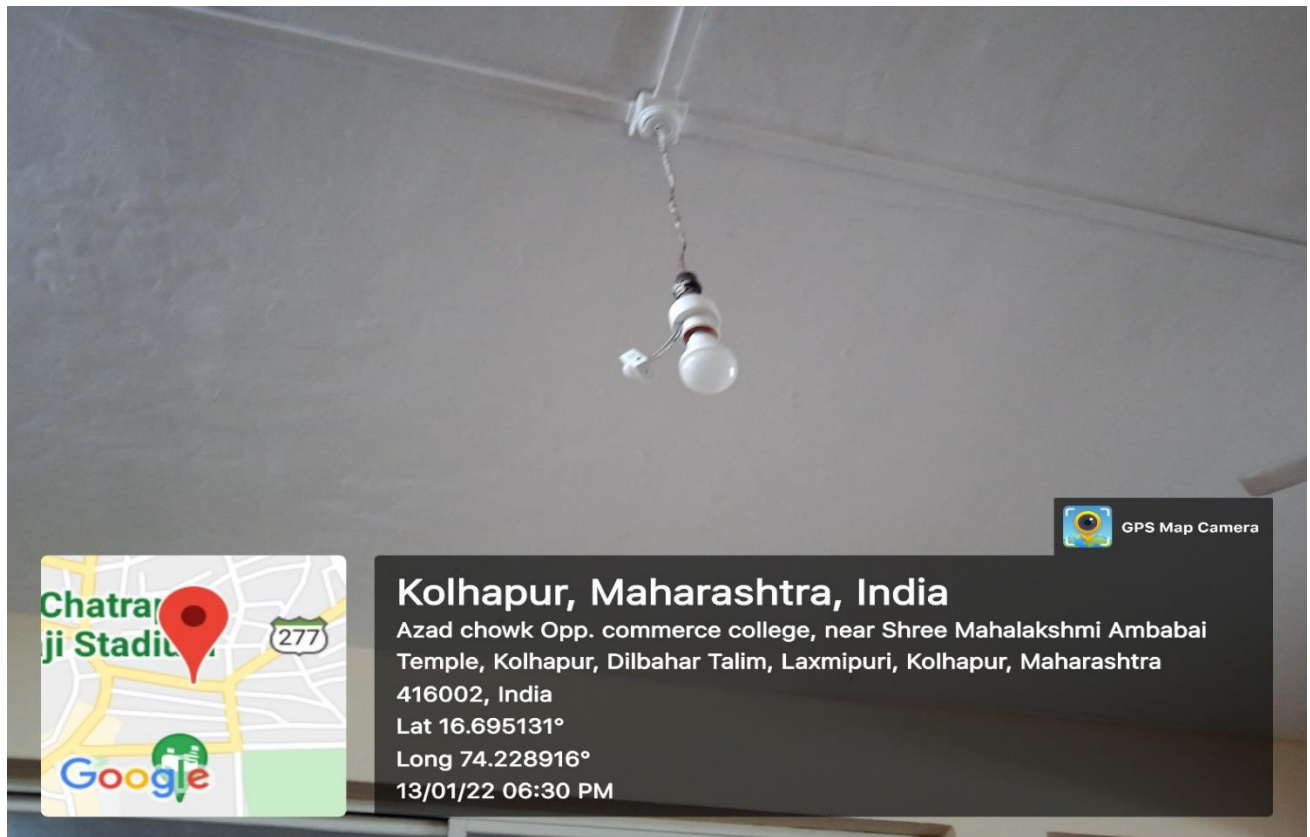
Geotagged photographs

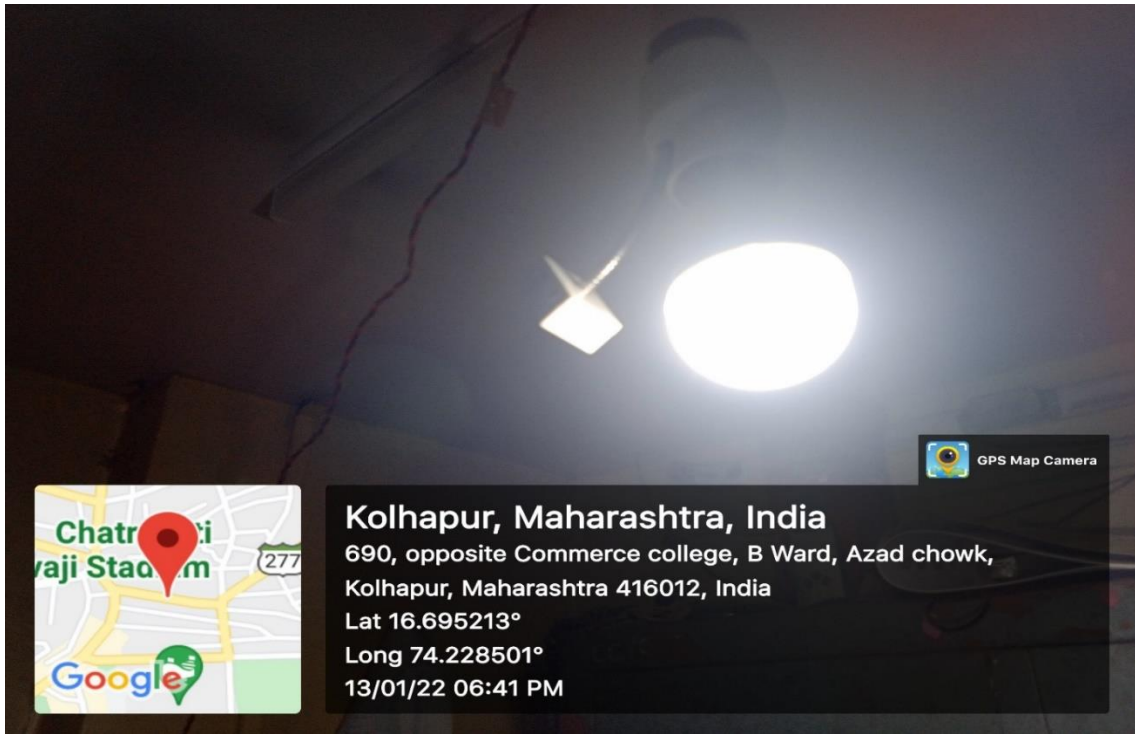
Solar energy



Sensor-based energy conservation

Sensor Bulbs

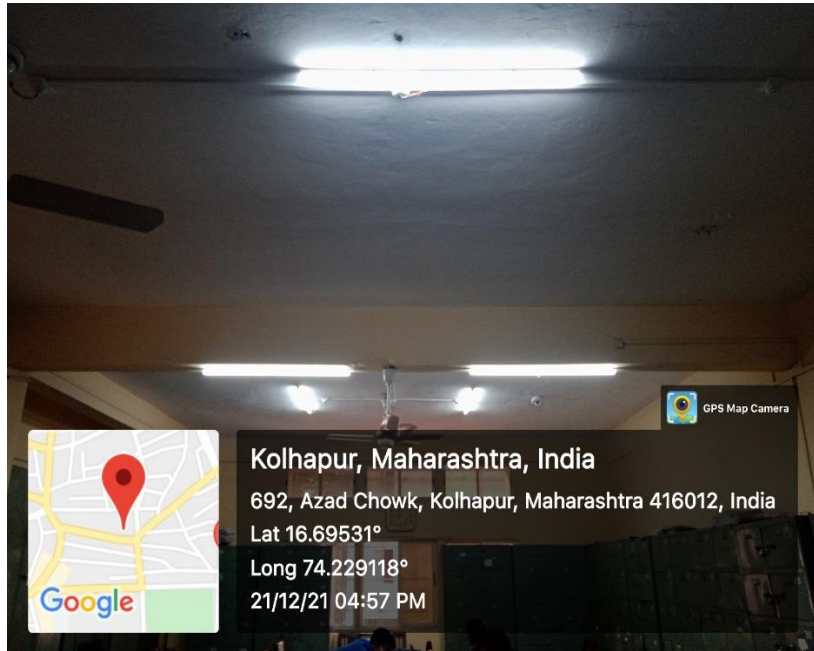




Use of LED bulbs / Power efficient equipment

LED Tubelights





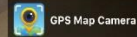
Kolhapur, Maharashtra, India

692, Azad Chowk, Kolhapur, Maharashtra 416012, India

Lat 16.69531°

Long 74.229118°

21/12/21 04:57 PM



Kolhapur, Maharashtra, India

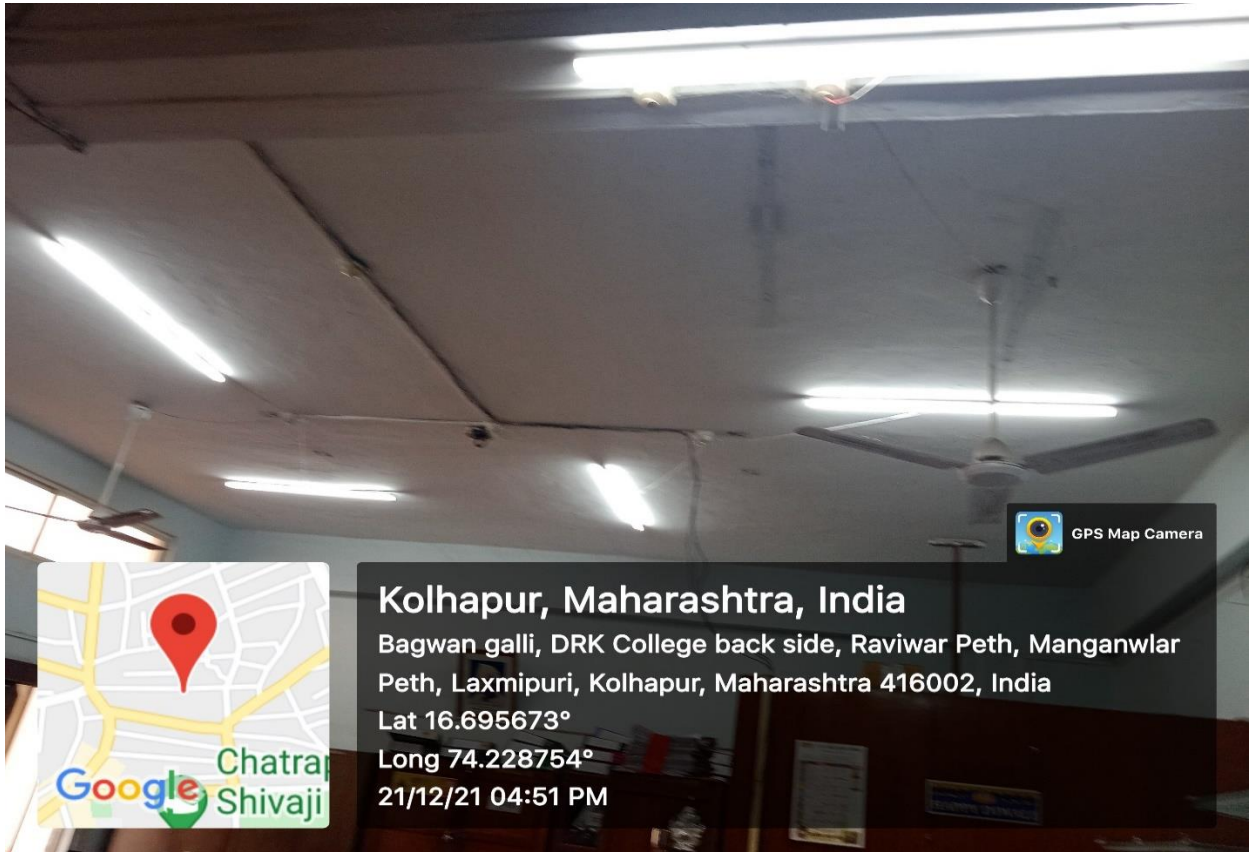
Bagwan galli, DRK College back side, Raviwar Peth, Manganwlar Peth, Laxmipuri, Kolhapur, Maharashtra 416002, India

Lat 16.695673°

Long 74.228754°

21/12/21 04:51 PM





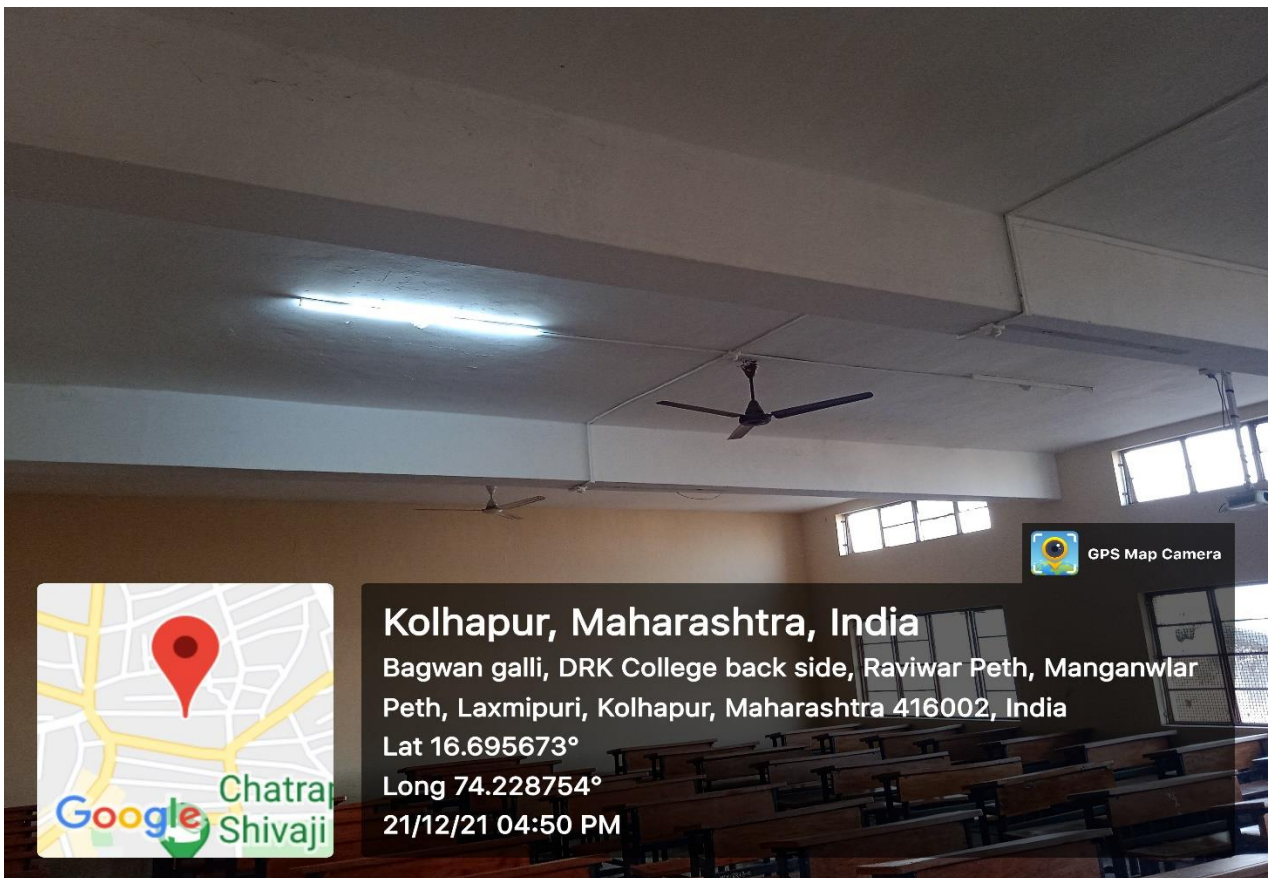
Kolhapur, Maharashtra, India

Bagwan galli, DRK College back side, Raviwar Peth, Manganwlar Peth, Laxmipuri, Kolhapur, Maharashtra 416002, India

Lat 16.695673°

Long 74.228754°

21/12/21 04:51 PM



Kolhapur, Maharashtra, India

Bagwan galli, DRK College back side, Raviwar Peth, Manganwlar Peth, Laxmipuri, Kolhapur, Maharashtra 416002, India

Lat 16.695673°

Long 74.228754°

21/12/21 04:50 PM

